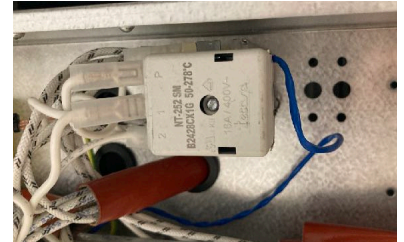
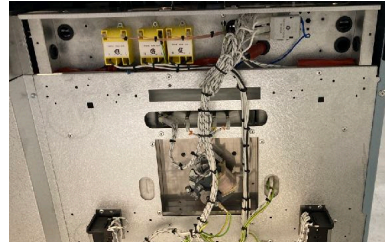


Oven Thermostat Adjustment

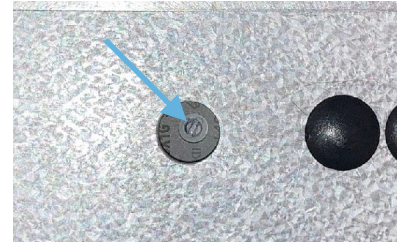
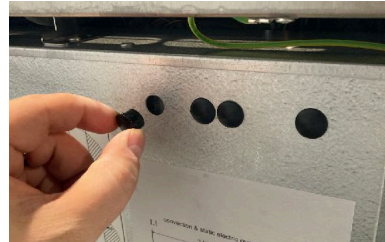
Written for the generation of ranges with PEL gas oven valves, manufactured between 2010-2016 (Gen.3)

The electric oven thermostat is located just inside the back panel, on the same axis with the oven control shaft. This will require the range to be moved away from the wall slightly so that you have access to the rear panel. Do not attempt to move the range by the towel bar, as this will cause damage to the porcelain enamel of the control panel.

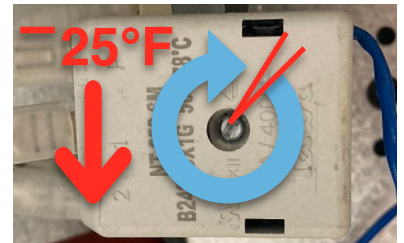
1. On older units, remove the back cover panel by removing the [6 or 8] 7mm sheet metal screws that hold the rear cover on.



2. Newer units are manufactured with a removable plastic plug that covers the adjustment screw. Remove the plug that is aligned with the knob and control shaft of the oven being adjusted. This allows an adjustment without having to remove the entire cover panel.



3. To adjust the thermostat you may need to scrape the anti-tamper paint from the screw head. Make certain to use a fine-blade ($1/8''$ wide) screwdriver to avoid stripping it. Rotate the screw Clockwise to *Decrease* temp - about 10 degrees of arc = approx. 25°F of temp adjustment.



4. The gas oven thermostat is located underneath the rangetop directly behind the PEL gas oven valve. The rangetop must be lifted to access the thermostat. The temp calibration adjustment for this thermostat is the exact same as the adjustment for the electric ovens as described above.

